



# Kamo High School

TE KURA TUARUA O TE KAMO

## TE KAUPAPA O TE KURA TUARUA O TE KAMO

# PROSPECTUS



Whakatutuki  
tikahia  
kotahitanga –  
Together we  
will succeed





# CONTENTS

KIA ORA, NAU MAI, HAERE MAI

A MESSAGE FROM OUR PRINCIPAL 2

---

KO TŌ MĀTOU HITORI

OUR HISTORY 4

---

Ō TĀTOU UARA

OUR VALUES 6

---

Ō TĀTOU MĀTĀPONO

OUR PRINCIPLES 8

---

HE KŌRERŌ MAI I O MĀTOU RANGATIRA

STUDENT LEADERSHIP 10

---

KO TŌ TĀTOU KURA

OUR SCHOOL 12

---

AWHINATIA

PASTORAL CARE 14

---

TŌ TĀTOU KAUPAPA AKO

OUR ACADEMIC PROGRAMME 16

---

TŪ KAHA AKORANGA

LEARNING SUPPORT 22

---

TŌ MĀTOU AHUREA

OUR CULTURE 24

---

PAPA TĀKARO

SPORT 28

---

NGĀ HUIHUINGA-A-IWI

IWI EVENTS 30

---

KIA ORA, NAU MAI, HAERE MAI

# A MESSAGE FROM OUR PRINCIPAL



NATASHA HEMARA, TUMUAKI (PRINCIPAL)

He mihi mahana ki a koutou katoa, nau mai haere mai ki te Te Kura Tuarua o Kamo. To all ākonga (students) and whānau (families) we warmly welcome you to our school community.

Kamo High School seeks to educate our young people to grow into fine adults who will contribute to our society in a positive way. Each student brings a unique set of skills and knowledge with them and we value this diversity, aiming to develop every student as an individual. At Kamo High School we are able to provide students with multiple academic pathways to ensure that they are able to find a fit for themselves for their future.

It is our belief that for our ākonga (students) to succeed, they need to feel connected and cared for and have confidence in their own abilities. When an ākonga (student) is comfortable in their abilities they will be encouraged to take risks in their learning and develop as a self-managing individual who, when they leave us, can navigate their own world in a confident and directed manner.

Our mission statement "Through whanaungatanga we empower our ākonga to build resilience, integrity and excellence as they pursue their pathways to success" signals our commitment to building relationships and to work with whānau to support our students' learning. We look forward to you joining our school where you will become an important part of our learning community.

The pastoral care of our students is paramount. At Kamo High School a network of Deans, Whanau Teachers, Counselors and Youth Worker supports each student. Strong links to students' whānau allow us to develop a deep understanding of each individual's needs. Our explicit teaching of values and dispositions in extended whanau time three times a week supports our students to remain connected despite all of the disruptions that we have been through in our last few years.

Our staff are friendly, experienced professionals who enjoy working with young people. We work together to ensure that our students are cared for and have access to both personal and academic success.

We give you our commitment that we will do our very best to provide your child with multiple learning experiences and opportunities that will set them up beyond school.

We are excited to share with you the concept of our new school development due to be finished at the end of 2023.

**Natasha Hemara**

*TUMUAKI (PRINCIPAL)*





# KO TŌ MĀTOU HITORI

# OUR HISTORY

## Ko Te Kamo Te Rangatira

Te Kamo was the rangatira who oversaw the wellbeing of his people residing in the region namely Ngararatunua, Tikipunga, Hikurangi, Three Mile Bush, Whau Valley and what is now, the township known as Kamo. His early ability to facilitate matters face to face earned him the name Te Kamo.

The area was known for its abundance of ponga and whau trees, with the hills and valleys densely populated with this flora. During this period of time, the ponga tree was used as a thatch for whare roofing, while the Whau tree was used for its embalming qualities.

In recognition of the superabundance of ponga growth, Te Kamo built his pā on the hill that is now the site of the Kamo war memorial hall and kindergarten, naming the site Te Rauponga.

In Grant Street stands a Puriri tree which was a significant site.

In acknowledgement of Te Kamo the school adapted a metaphoric relationship between the ponga tree and students attending Kamo high school. Each part of the tree symbolises the growth of our school, students and staff.



Te Kura Tuarua O Te Kamo (Kamo High School) was gifted the following whakatauki:

Pērā ki te ponga e whakaruruhau  
e awhi ana ōna nei tētēkura.

Look to the ponga tree for  
strength and support.



The roots are the strong base, our values that underpin all we do. They help us to find depth and strengthen our base for further years of growth. As our young people participate in their school they will continue to develop as vital members of our school community. Our tātou, value of **urunga**, **participation** is linked to our involvement, our risk taking in our learning and giving things a go, all the while encouraging the same participation from those around us.



The trunk shows the growth and progression people make. It also is a symbol of **perseverance**. It takes strength, diligence and goal setting to make our way up the ponga tree to the rewards that lie at the top. In our younger years we might find ourselves climbing up the trunk on more occasions than when we have matured into the fronds themselves.



The fronds depict the pathways people can pursue for their personal success. It is a symbol of new growth, new development and seeking new ways of knowing and being. Our tātou, value of **pride** supports the growth of an individual as they determine who they are, what is important for themselves and being able to determine their sense of what is right to support others.



This is when akonga has developed their sense of understanding and place in themselves. Students in regards to aroha atu, recognise the **respect** that they have for themselves and towards others. As their branches grow they shelter the new fronds (younger students) that grow beneath them as well as those that are making their way up the trunk of the ponga. As the older fronds move on from school the younger fronds grow to replace them enabling them to guide and support the younger ones coming through.



The shoots that grow from the fronds help support and strengthen the pathway. These are vital parts to help us set goals and take action to accomplish those goals. These aspects of our ponga represent our personal **self management**, and our responsibility for our own actions.

Kamo High School was opened in 1960 and was situated on the Wakelin's Saleyards. The Walter Wakelin Ltd Auctioneers, Stock and Station Agents had been operating their business since 1874 and owned land on either side of Kamo Road. They had a number of holding pens and paddocks for the cattle that were to be sold by auction. At one occasion they held 3000 head of cattle ready for sale. In 1951 the Ministry of Education encouraged Mr Wakelin to submit an asking price for the sale of his land. The Crown had decided to acquire his property for the site of a new post primary school. Valuation was completed and the state agreed to pay Mr Wakelin 9.950 pounds for 22 ¾ acres (approximately 10 hectares).

For decades the black and gold shield and anchor of the "Fideliter" crest had symbolised secondary schooling in Whangarei. Kamo High School would require its own symbol that would give meaning to duties and responsibilities, enabling and bringing purpose into dreams and aspirations. Peter Smith Art Lecturer at Auckland teachers College designed a crest where an eagle represented vigour and moral striving and an open bible symbolised Christian principles and purpose. These, with the school motto "Ad Vitam Progrediamur" (let us go forward to life) combined to form a striking crest of red green and white.

In the 1990's to acknowledge the bicultural nature of Kamo High School a second crest was added with the motto "whakatutuki tikahia kotahitanga" – Together we will succeed.





Ō TĀTOU UARA

# OUR VALUES

Kamo High School-wide expectations



**TŪ PONO**  
PRIDE



**AROHA ATU**  
RESPECT

STATEMENT	<b>I believe in myself and what is right.</b>	<b>I treasure the power of love, respect for myself, and respect for others.</b>
ALL AREAS	<p>I wear my uniform correctly</p> <p>I promote Kamo High School positively</p> <p>I report hazards, issues and problems.</p>	<p>Follow instructions</p> <p>Use polite and appropriate language</p> <p>Treat myself, others and property with care.</p> <p>Use the bins provided</p>
CLASSROOM	<p>I respect my environment</p> <p>I keep my learning areas tidy</p>	<p>Listen to the opinions of others</p> <p>Speak at an appropriate time</p>
ONLINE	<p>I have a positive online presence</p>	<p>Post comments with appropriate language</p>
OUTSIDE OF SCHOOL (Feild trips / EOTC / Gateway)	<p>I am mindful and caring of people</p>	<p>Take only photos, leave only footprints.</p>





**TŪ TONU**  
PERSEVERANCE



**ŌNA TŪ**  
SELF MANAGEMENT



**URUNGA**  
PARTICIPATION

**If I fall or fail,  
I stand up again.**

I meet deadlines/goals  
I keep trying

I revisit my work to improve  
my outcomes

I learn to use new apps  
and programmes effectively

I do not engage in unkind  
discussions online

**I am responsible  
for my actions.**

I am present for learning  
I am on time for learning  
I am ready for learning

I set goals and work  
towards them  
I ask for help

I keep myself and others  
safe online  
I use appropriate tools  
to support my learning  
I access online content  
for learning

I take actions that will ensure  
the safety of everyone

**I am a vital part  
of the school.**

I give things a go  
I work positively with others

I engage in learning  
I complete my work

I only share relevant and kind  
information with others  
I collaborate with others

I encourage others  
to participate positively



Ō TĀTOU MĀTĀPONO

# OUR PRINCIPLES

Our Principles are informed by a range of educational research, feedback from our community and experience from a range of sources. The Principles guide the direction of our curriculum design and pedagogy.



## WHĀNAUNGATANGA

We value quality learning relationships. Learning thrives in a whānau-based environment that supports engagement and success.

---

### Relationships matter

Mana enhancing practices are promoted and supported in all areas of our school. Knowing our learners is integral to understanding how to best meet the needs of the students.

### Community Engagement

We strive to communicate, engage with and involve our whānau and community in our school. We believe in this partnership to ensure student success.



## AKO

We value ako, which is based on the principle of reciprocity. Ako is underpinned by power being shared in learning.

---

### Learning to Learn

We encourage our students to take ownership of, and reflect on their learning.

### Whakakotahitanga

Unity amongst all teachers and students where collaboration (mahi tahi) is encouraged and supported.

### Student Voice

Is valued and informs decision making across the school.





## **TUAKIRI**

Who I am is important, my whakapapa shaped my identity, I care about my place and space in this world and I belong to and contribute to my community.

---

### **Equity, Diversity & Inclusiveness**

Ensures that akonga (students) have an opportunity to express individual culture and identity.

An inclusive learning community fosters manaakitanga, compassion, respect and the skill of relating positively with a variety of people.

### **Te Tiriti o Waitangi**

Is meaningfully acknowledged and includes te reo me ona tikanga o Ngapuhi.

### **Aroha**

The practice of compassion and respect is a day to day way of being in our school.



## **WHENUA TANGATA**

We value learning that is connected. Contexts are provided for learning where identity, language and culture are activated.

---

### **High Expectations**

Through quality teaching, expert teachers and flexible programming empowers students to achieve personal excellence.

### **Future Focus**

Future focussed learning experiences and implementation of 21st century skills to equip students for a changing world.

### **Coherence/Pathways**

We will provide opportunities and programmes for our taura so that they can navigate their own path to their future learning and career pathway.



HE KŌRERŌ MAI I O MĀTOU RANGATIRA

# STUDENT LEADERSHIP





## Te Kura Tuarua o Te Kamo offers a range of student leadership opportunities.

Kamo High School is Whangārei's largest co-ed school, and it caters to every learner's interests and passions. All students, including Juniors, are given the opportunity to lead others and contribute to the school through the work of different committees. Each committee is led by Student Prefects. Head Prefects lead the Prefect team. Here are just a few of the areas students can lead in.

### Sports

Involved in running the various sports competitions and promoting participation and active lifestyles.

### Iwi

Ensure that each Iwi is organised and ready for the many Inter Iwi competitions run throughout the year.

### Arts

Promote the Arts in the school and help run Kamo's Got Talent and other exciting events that enrich the cultural life of the school.

### Wellness

The Wellness team have a range of initiatives and events designed to enhance wellbeing and overall health in the school.

### Academic

The Academic leadership sphere involves promoting high standards of effort and achievement as well as running Academic celebration assemblies.

### Tuakiri

The Tuakiri leadership role involves leading through a Te Ao Māori lens.

### Environmental

Environmental leadership is about caring for and enhancing the physical environment of the school.



**Mā mua ka kite a muri.  
Mā muri ka ora a mua.**  
To those who lead give  
sight to those who follow.  
To those who follow give  
life to those who lead.



KO TŌ TĀTOU KURA

# OUR SCHOOL





## Kamo High School is a modern, well-resourced school that offers a fantastic range of facilities for students.

Learning and growing is at the heart of what we do here.

Our facilities include:

- Full sports fields, including outdoor, all-weather courts, two indoor gyms and a school pool.
- Full Trades Academy workshop area, including covered construction areas enabling year-round building of cabins.
- Large on-site Horticulture and Agribusiness gardens and workshop area.
- Extensive Arts facilities, including Photography dark room, Dance Studio, Performance Theatre, and music studios.
- Well equipped Technology Block, with three kitchens, STEM Electronics room, Computer suite, textiles room, Engineering workshop, Laser Cutter and woodwork area.

## Kamo High School redevelopment

Work is well underway for Kamo High School's multi-million dollar redevelopment.

Contracted by the Ministry of Education, Matakōhe Architecture and Design have been working closely with Kamo High School and Ngāti Kahū o Torongare to illustrate cultural narratives within the new space.

Included in the new build will be 22 spacious new classrooms with elevator access to the second storey. There will also be a new and improved wānanga whare which will be housed at the centre of a large courtyard, with the lower-level classrooms exterior bricks in the shape of traditional Māori tāniko (patterns). Included in the new build is a separate building accessed via Kamo Rd for Blomfield School.



**Strengthened classroom routines and management of learning programmes improve students' readiness to receive learning. Students are in class on time and teachers are planned and ready to receive students.**

*EDUCATION REVIEW OFFICE [ERO] 2022*



# ĀWHINATANGA

# PASTORAL CARE

The provision of support and guidance including counselling is an essential service offered at Kamo High School. It is important that parents, whānau and students are aware of this service as the

philosophy of the school in all matters is that when we learn and work together, success is all the more probable no matter how difficult the circumstances.

## Tumuaki Tuarua/Deputy Principals



DARRYL DAVIES



AMY TIPENE



CONRAD STEWART



TRACEY ROSE

## Deans



GAVIN TURKETO - KAHA



MARK TURTON - MOANA



ALAN BAYLY - RANGI



MISSY WRIGHT - TAPERE



LYSSA STEWART - WAIMA

Additional counselling and guidance for students and their whānau supports taurira to have a positive experience and settle into school routines and principles of whanaungatanga, ako, tuakiri me whenua tangata.

EDUCATION REVIEW OFFICE [ERO] 2023

## Iwi, Hapū, Whānau at KHS

Students who attend Kamo High School become part of a Iwi, Hapū and Whānau whakapapa. There are five Iwi (Kaha, Moana, Rangi, Tapere, Waima) with each Iwi led by an Iwi Dean. The Iwi Deans are integral to providing pastoral learning and wellbeing needs for all students.

They do this by:

- By creating a safe, exciting and fun environment
- By role modelling a student centered culture of care
- By being consistent

### Student Support Centre

The Student Support Centre at Kamo High School is the place where students can go if they have any concerns about their health and wellbeing.

At the SSC students have access to:

- Youth Health Nurses
- Guidance Counsellors
- Youth Worker
- Access to GP services
- Social Worker
- Outside support services including: Rubicon (drug and alcohol support, Te Roopu Kimiora (Child and Adolescent Mental Health), Youth Services, and other outside counselling support.
  - The sick bay if students are unwell during the school day
  - Students can make their own appointments, with all services offered confidential and non-judgemental.

We also welcome parents and caregivers to get in touch if they have concerns about their young person's health or wellbeing.

Events and groups are run through the Student Support Centre such as our Gay, Straight Alliance group which provides a safe space for students to be themselves.

## Ka Ako, Ka Ora Healthy Lunch Program

We are part of the free lunch program for all students at first break (11:00–11.40am) and second break (1:05PM – 1:35PM). These are distributed at the canteen.

## For Year 9 students Transition to High School is made easier with:

- Supportive whānau groupings
- Numeracy support
- Wide range of subjects
- Easy access to teaching staff
- Orientation programmes
- Year 9 camp
- Learning support specialists
- Leadership opportunities
- Wide range of co-curricular activities, sport, kapa haka etc.

## Making contact/staff members

### Principal

**Ms Natasha Hemara**

### Deputy Principals

#### Ms Tipene

amy.tipene@kamohigh.school.nz

#### Mr Davies

darryl.davies@kamohigh.school.nz

#### Mr Stewart

conrad.stewart@kamohigh.school.nz

#### Mrs Rose

tracey.rose@kamohigh.school.nz

### Iwi Deans

#### Kaha – Mr Turketo

gavin.turketo@kamohigh.school.nz

#### Moana – Mr Turton

mark.turton@kamohigh.school.nz

#### Rangi – Mr Bayly

alan.bayly@kamohigh.school.nz

#### Tapere – Ms Wright

missy.wright@kamohigh.school.nz

#### Waima – Ms Stewart

lysa.stewart@kamohigh.school.nz

### Careers Advisors

#### Director of Pathways – Grant Angus

grant.angus@kamohigh.school.nz

#### Gateway Coordinator – Lisa Lawrence

lisa.lawrence@kamohigh.school.nz

#### NZQA Liaison – Janelle McKenzie

Janelle.mckenzie@kamohigh.school.nz



TŌ TĀTOU KAUPAPA AKO

# OUR ACADEMIC PROGRAMME



## Passion Projects & Wānanga Time

Year 9 and 10 students participate in Passion Projects. Passion Projects are an opportunity to determine **your** own adventure and use initiative to show individual creativity, resourcefulness, motivation, and leadership ability surrounding a given topic or cause.

## Year 9 Programme

Year 9 students have the opportunity to follow a traditional pathway of learning, made up of English, Mathematics, Science, Social Studies, Health & Physical Education, including 2x options from Arts and Technology and Passion Projects.

**OR**

**Choose your own adventure.** This is a **Cross-curricular Innovative Learning Programme** that involves learning across two subject areas with two teachers.

- Maths/Science
- English/Science
- Social Studies/Physical Education & Health
- English/Social Studies
- Maths and Physical Education and Health
- There will be 2X options and passion projects

All year 9 students will participate in a compulsory mātauranga Māori option.

The purpose is "To provide an authentic programme that weaves through a sense of pride and identity as a member of Kamo High School to empower rangatahi with a sense of self and belonging. It is intended that the kaupapa will be underpinned by a Māori lens that embraces who we are, our history, school values and principles, stories of Ngāpuhi, school karakia and waiata.

**Improving students' literacy is a key focus. Leaders report positive shifts with some students making accelerated progress. Targeted programmes for numeracy continue to strengthen and adapt to the needs of these students so they can better access the broader curriculum. Improved use of assessment is a key factor in lifting these results.**

EDUCATION REVIEW OFFICE [ERO] 2023

## Year 9

Students have the opportunity to study a wide range of subjects from all learning areas of the New Zealand Curriculum so that they are well informed when it comes to Senior Option Choices. Programs are delivered in core classes.

## Year 10

The year 10 programme builds on year 9, where students will continue to study English, Mathematics, Science, Social Studies and Health & Physical Education in their core class. Option selection builds on from their year 9 experience.

## Years 11

Students choose five subjects to study, with English and Mathematics being compulsory towards their NCEA qualification.

## Year 12

Students select five subjects to study towards NCEA Level 2. Courses are available for those students considering university as well as those interested in trades and other career options.

## Year 13

Students choose five subjects to study towards NCEA Level 3, in preparation for University. Top academic students are able to undertake Scholarship examinations. There are also courses available for students interested in trades and other career options rather than university study.



## Timetable

Kamo High School timetable consists of 3 x 90 minute periods a day over a 10 day cycle. Each subject runs for 5 periods in a 10 day cycle.

Junior Timetable					
Day 1-5	Monday Day 1	Tuesday Day 2	Wednesday Day 3	Thursday Day 4	Friday Day 5
Block 1	CORE 1	OPTION	CORE 5	CORE 4	CORE 3
Enhancement	Whānau 10:30 – 11:00	Passion Project 10:15 – 11:00	Whānau 10:30 – 11:00	Passion Project 10:15 – 11:00	Whānau 10:30 – 11:00
Interval 11:00 – 11:40					
Block 2	CORE 2	CORE 1	OPTION	CORE 5	CORE 2
Lunch 1:10 – 1:40					
Block 3	CORE 3	CORE 2	CORE 1	OPTION	CORE 5

Senior Timetable					
Day 1-10	Monday	Tuesday	Wednesday	Thursday	Friday
Block 1	Specialist Learning 1 9:00 – 10:30	Specialist Learning 4 8:45 – 10:15	Specialist Learning 2 9:00 – 10:30	Specialist Learning 5 8:45 – 10:15	Specialist Learning 3 9:00 – 10:30
Enhancement	Whānau 10:30 – 11:00	Wānanga 10:15 – 11:00	Whānau 10:30 – 11:00	Wānanga 10:15 – 11:00	Whānau 10:30 – 11:00
Interval 11:00 – 11:40					
Block 2 11:40 – 1:10	Specialist Learning 2	Specialist Learning 5	Specialist Learning 3	Specialist Learning 1	Specialist Learning 4
Lunch 1:10 – 1:40					
Block 3 1:40 – 3:10	Specialist Learning 3	Specialist Learning 1	Specialist Learning 4	Specialist Learning 2	Specialist Learning 5

Senior students (yrs 11-13) choose 5 specialist learning areas. Every subject has 6 periods in a 10 day cycle.

The timetable to extend learners' access to the Curriculum is strengthening the range of learning and engagement in purposeful and valued learning opportunities.

### Flow of Subjects In Junior School

Faculty	Year 9	Year 10
<b>The Arts</b>	Art * Drama * Music *	Art Visual * Art Design * Drama * Music *
<b>English</b>	English ✓	English
<b>Māori</b>	Te Reo Māori *	Te Reo Māori *
<b>Mathematics</b>	Mathematics ✓	Mathematics ✓
<b>Physical Education &amp; Health</b>	Health ✓ Physical Education ✓	Health ✓ Physical Education ✓
<b>Science</b>	Science ✓ Horticulture & Agriculture *	Science ✓ Horticulture & Agriculture *
<b>Social Sciences</b>	Social Studies ✓	Social Studies ✓
<b>Technology</b>	Hard Materials * Digital Design * Food *	Hard Materials * Digital Design * Food * STEM Electronics *

✓ Compulsory Subjects    \* Option Subjects





Flow of Subjects In Senior School			
Faculty	Year 11- Level 1	Year 12 - Level 2	Year 13 - Level 3
<b>The Arts</b>	Art Visual Art Design & Photography Drama Music	Art Visual Art Design Photography Drama Music	Art Visual + Art Design + Photography + Drama + Music +
<b>English</b>	English ✓	English	English +
<b>Māori</b>	Te Reo Māori	Te Reo Māori	Te Reo Māori +
<b>Mathematics</b>	Mathematics ✓	Mathematics Calculus	Statistics + Calculus +
<b>Physical Education &amp; Health</b>	Health Physical Education	Health Physical Education Outdoor Education	Health + Physical Education + Outdoor Education
<b>Science</b>	Science Agribusiness	Biology Chemistry Physics Agribusiness	Biology + Chemistry + Physics + Agribusiness +
<b>Social Sciences</b>	Social History Geographic Commerce	History Social Psychology Tourism Geography Enterprise Management Media Studies	History + Social Psychology + Tourism Geography + Enterprise Management + Media Studies +
<b>Technology</b>	Hard Materials Digital Technology Design & Visual Communication Hospitality STEM Electronics	Wood Metal Digital Technology Design & Visual Communication Hospitality STEM Electronics	Wood Metal Digital Technology + Design & Visual Communication + Hospitality
<b>Trades</b>	Building and Construction Trade Academy	Building and Construction Trade Academy	Building and Construction Trade Academy
<b>Learning Support</b>	SPEC	SPEC	SPEC
<b>Tertiary Learning Opportunities</b>		North Tec Automotive Hair and Beauty Health	North Tec Automotive Cookery Hospitality Tourism Management

✓ Compulsory Subjects   \* Option Subjects   + University Entrance Approved Subjects

There is a clear focus  
on removing barriers  
to encourage positive  
participation in learning.





# TŪ KAHA AKORANGA LEARNING SUPPORT



## We have an inclusive model of learning support at Kamo High School.

We have an inclusive model of learning support at Kamo High School. This means that wherever possible all students are integrated into all classes. Teachers are provided with strategies to support students within their classes. From time to time it is necessary to support students in the Learning Hub in small groups or on an individual basis. In these cases Collaborative Learning Plans are created and followed with input from the staff, the student and their whānau. Additional support for eligible students is provided in NCEA assessments through the NZQA Special Assessment Conditions such as reader writers, special accommodation and the use of computers. All students across the school have access to Google Read Write and Supported Learning Units which provides all learners with the necessary tools to be successful within their learning. The aim of the department is aligned to the vision of the New Zealand Curriculum of producing Confident, Connected, Actively Involved, Lifelong Learners.

Students benefit from a range of wellbeing resources and support including access to school health nurses, guidance counsellors and youth workers including others external to the school.

*EDUCATION REVIEW OFFICE [ERO] 2023*





TŌ MĀTOU AHUREA

# OUR CULTURE



## We are proud to be a bicultural school which actively reflects and lives the Treaty of Waitangi.

The Treaty principles put our students at the centre of teaching and learning, asserting that they should experience learning which engages and challenges them, which is inclusive and which affirms their identity. We have established a kaupapa which supports our Māori, and all students, to pursue their full potential.

Through Kia Eke Panuku, we know our Māori students do their best when we reflect and value their culture, identity and language. We focus on building strong relationships, and as a school we have a collective and shared commitment to encourage Māori student success. We provide our Māori students with the tools they need to walk in both worlds – te ao Pakeha me te ao Māori, and being able to balance them both through a key to both huarahi or pathways. Student voice is a key part of the vehicle which drives our teaching and learning; we listen, we reflect, we improve.

### Te Kapa Waikamo

Te Kapa Waikamo is the name of the school Kapa Haka group. Kapa Haka provides an avenue for students to access the Māori world and be culturally-connected learners. It also provides them with a platform for expression, providing an opportunity to experience success, gain confidence through performance, and step up as leaders and role models. However it's not just Māori students who benefit from Kapa Haka. Through Kapa Haka, students are able to experience a holistic way of learning – which is conducive to a sense of well-being (hauora).

Te Kapa Waikamo participates in the annual Tai Tokerau Festival and competes at Tokihi ki Tua every second year. Throughout the year we also participate in events such as Matariki Whānau Day.



### KHS Karakia

Tukuna mai te mana  
Kia tū pono ahau i aku mahi katoa  
Me aroha atu, ka aroha mai  
Kia tū tonu hei rangatira mō te iwi  
Ko tōku tū, ka pakari ona tū  
Mā te urunga, ka puawai ahau  
Hei oranga mō Tātou katoa  
Tihei Mauri Ora

Give me the power

To stand in pride in all that I do

To respect others, so that I may be respected in return

To show perseverance, so that I may be a leader for my people

To have self-management, and encourage others to do the same

To participate, so that I may flourish

For the well-being of us all

Let there be life

### Waiata

ME MIHI

Me mihi ki te rangi e tū iho nei

Te whaea Papatūānuku e takoto nei

Horahia te mārino ki runga i te moana

Hoea mai te waka kumea mai

Ki te tākotoranga i tākoto ai te waka

Ki te tākotoranga i tākoto ai te waka

Te reo Māori me  
ōna tikanga is  
an important part  
of school life at  
Kamo High School.

EDUCATION REVIEW OFFICE [ERO] 2022





## Pink shirt Day

To speak up and stand together to stop bullying, Kamo High School celebrated Pink Shirt Day by having an educational and fun school-wide day. All the students are encouraged to wear pink and show up with a gold coin donation.

A group of prefects work together with the school to organise Pink Shirt Day as well as activities to engage the students. Teachers handed out stickers and all the Iwi's competed in the Iwi photo competition to see who showed all the school values through the Kaupapa of the day. For an extra challenge, a colouring competition was organised for anyone who wanted to join in. Students participated in Pink Shirt Day with pride and stood together to support each other.

## R. Tucker Thompson

Every year KHS students from years 9 – 13 have the opportunity to apply for an adventure of a lifetime on the R. Tucker Thompson 7 day Youth Development Voyage. The 7-day voyage takes students to places that you normally can't reach by road. You'll have the opportunity to explore the amazing Bay of Islands, you may even get the chance to sail up or down the coast and visit some of the coastal communities there. But wherever the wind takes you, it will be an experience you will remember forever.



## Library Services and Events

The library is a school community hub, a meeting place where all students can feel welcomed, able to be themselves, relax, socialise and take advantage of the many resources available.

We run termly Library themes including, reading incentives and library events.

### Our services include:

- Research skills
- Referencing sources for bibliographies
- Library events such as Trivia game shows, robotics club, STEM (Science, Technology, Engineering and Maths), minute to win it Halloween style, library scavenger hunts, Singstar, movie lunchtimes (based on a book and theme).
- Board games, card games and quizzes on offer during break times.
- Reading incentives
- Help with school assignments and research sources
- Blomfield Special School (who are part of our campus) story time and makerspace activity
- Emphasis on reading for pleasure and student interests
- Variety of mediums – ebooks, audiobooks, magazines, online databases, print collections.

Opportunities to engage with each other and lead in different ways are **valued by students.**

EDUCATION REVIEW OFFICE [ERO] 2022



## Itinerant Instrument tuition

As part of the co-curricular activities offered to students at Kamo High school, the itinerant instrument tuition programme offers music students the opportunity to receive highly specialised tuition on various instruments. Students are permitted to come out of different regular classes once a week for free lessons on guitars, bass guitar, drums and piano/keyboards.



## Smokefree Rockquest

New Zealand's biggest secondary school music performance competition. Kamo High School has won the Northland Regional section five times in the last 12 years, creating quite a tradition. One year our top Duo 'Luke and Amberly' came 3rd overall in the National Finals held at Founders theatre in Hamilton. In 2023, our top band 'Close Contacts' also made the Te Tai Tokerau regional finals.

## Showquest

Kamo High School is actively involved in Showquest, Aotearoa's largest performing arts competition. It involves performing an original performance that encompasses Art, Music, Dance, Drama, Culture & Technology. It is a fantastic chance for aspiring performers to test themselves at the highest level. In 2022, Kamo High School placed 1st in the Northland region and 3rd overall in 2023, gaining 5 awards.



# PAPA TĀKARO SPORT



Kamo High School provides and encourages participation in a wide variety of sports by providing students the opportunities to get involved in sports whether it is at a high level, to improve fitness and promote healthy lifestyle choices or as a social participant.

Participating in Sport helps the students build character, work as part of a team, develop leadership, self management and perseverance as a whole.

Most sports participate in regular Saturday or Mid Week competitions against other schools across the Northland region. We also have regular

NSSSA events on a weekly basis which provide the opportunity for students to have a go at new sports.

Several Kamo High School sports teams participate in the Winter Tournament Week each year as well as providing opportunities through school exchanges and fun sports activities/events.





NGĀ HUIHUINGA-A-IWI

# IWI EVENTS



## At Kamo High School, every student becomes part of an Iwi, Hapū and Whānau.

The five Iwi are Tapare, Moana, Kaha, Rangi and Waima. Each Iwi is led by a Dean and student Prefects. Not only does your Iwi provide a safe and caring academic and pastoral support network, but it also forms the basis for our exciting inter-Iwi events schedule.

Iwi events are a fantastic chance to have fun, compete with other Iwi and get to know students from different year levels. It is a chance to be recognized for your contribution outside of the classroom environment. These events occur regularly throughout the school year.

Some of the Iwi events are:

- Swimming Sports
- Tabloids
- Volleyball
- Netball
- Soccer
- Turbo Touch
- Pink Shirt Day
- Kahoots and quizzes
- Cultural events and competitions throughout the year

Students present well  
and are respectful.  
They enjoy positive  
relationships with their  
teachers and peers.

EDUCATION REVIEW OFFICE [ERO] 2023

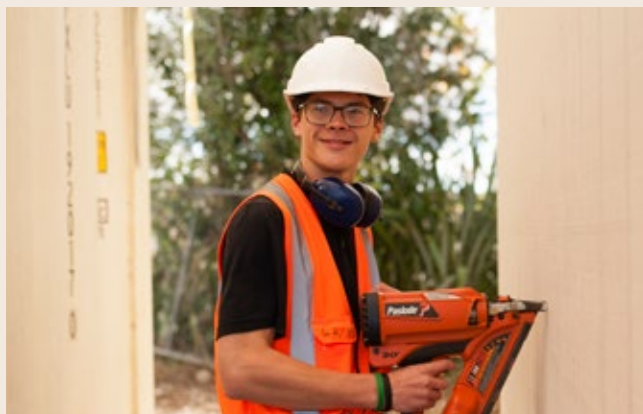




## What our students say about Kamo High School

"Kamo High School has a good system of education. I think this is because the teachers are helpful and supporting, as well as understanding for the most part. My best experiences in any school for quite a few years."

*SAM – YEAR 9*



"I really like KHS because they have really good teachers to help me with my learning. My classes are fun and interesting."

*KHAIA – YEAR 9*



"My older siblings went to other schools but when I came to the open evening I liked the feel of Kamo High School. I am pleased I chose KHS. The teachers are kind and really care about me. I enjoy the choice of options."

*DEARNE – YEAR 9*

"I like KHS because it suits my learning needs and the other students are kind and easy to get on with."

*MARLIE – YEAR 9*

"KHS is good. I love the classes I'm in because the teachers teach well. I enjoy the activities we have during interval and lunch."

*OLIVER – YEAR 9*



"It is a good school where you can be yourself. I have made lots of new friends and the teachers have high expectations."

*XAVIER – YEAR 9*

"KHS is a welcoming space where it is ok to make mistakes and learn from these. The students and staff are really supportive."

*ABI – YEAR 9*









**Kamo High School**  
TE KURA TUARUA O TE KAMO